

North West Coast Connections Project



ERP Workshop
10th May 2013

Project Need

- >450,000 people (down from 1.3million at stage 1)
- 11 District/Borough Councils across two Counties
- 181 parishes (down from 582 at stage 1)
- Around 140 miles of power corridor needed
- Treasured landscapes
- Ecologically significant landscapes



Working Environment



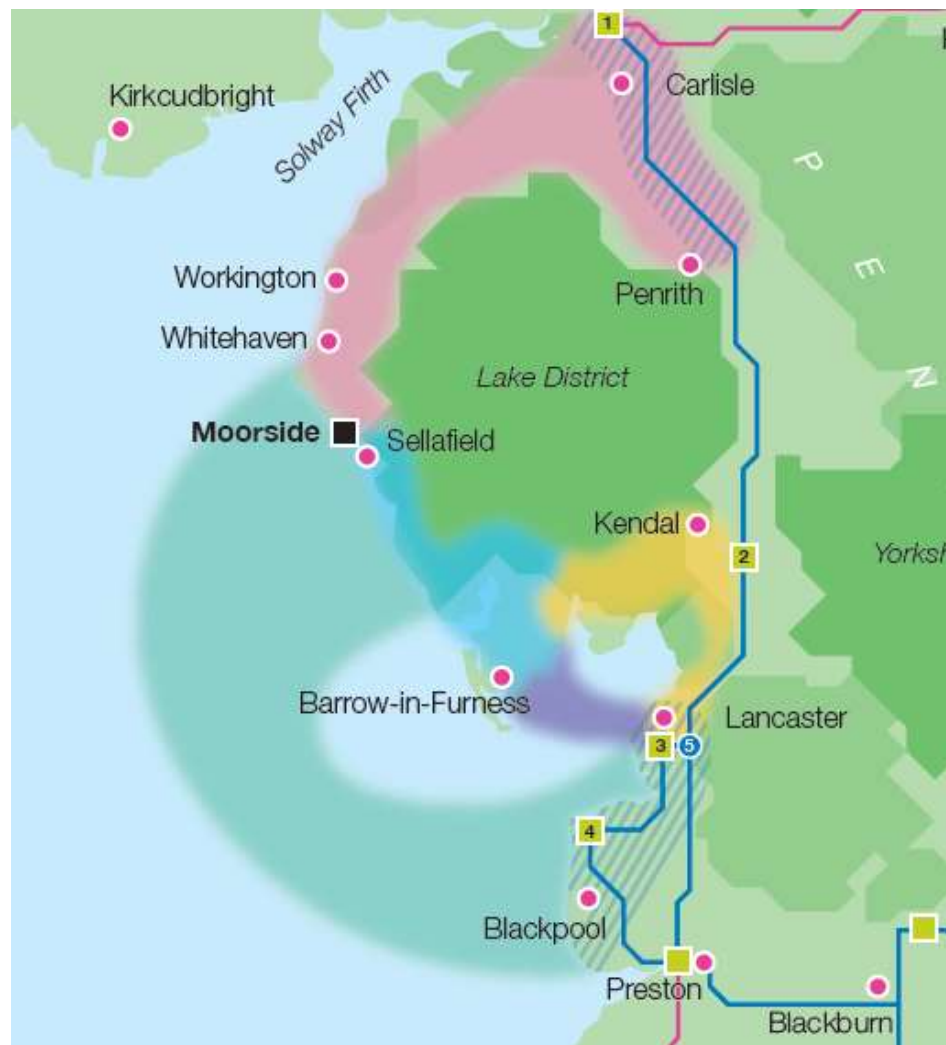
- Treasured landscapes
- Ecologically significant areas
- Local designations
- Places of real significance for local communities

The Toolkit



Strategic Options Outcome

- Places of real significance for local communities
- Engaged and positive stakeholders
- NuGen and Electricity North West active partners
- Open
- Honest Engaged
- Genuine dialogue



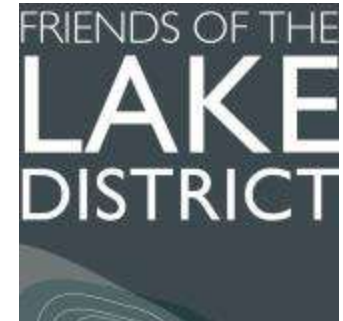
Working With Communities

- Although we are at an early stage of the project we have over 3 years of dialogue already
- NW steeped in energy projects and knowledge
- Communities are engaged and savvy
- NG wish to build on existing community structures
- Built on the work of Britain's Energy coast



Working With Communities

- We have trusted stakeholders and generated trust in return
- We have worked with community representative groups at an earlier stage than is normal for developers
- Stakeholders are reassured that we are open and transparent

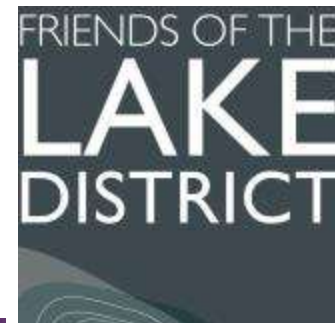


Strategic Partners

- Strategic Reference Group
- Local authorities, statutory bodies and regional interest groups
- Flows from work by Britains Energy Coast
- NuGen and Electricity North West
- Strong facilitation team



marine
management
organisation



Strategic Partners

- Strategic Reference Group
- Local authorities, statutory bodies and regional interest groups
- Flows from work by Britain's Energy Coast
- NuGen and Electricity North West
- Strong facilitation team



Have We Been Successful?

- Local authorities satisfied with stage 1 consultation
- 7000+ website visits with 254 representations from the public
- Balanced reporting in the media



Proud of our past. Energised for our future.

Any Questions



“We recognise the importance of the project to the west coast economy and we want to take part in consultations about all the options. ”



“There’s no ‘us and them’, the local authorities and National Park are all working closely with the National Grid”

